

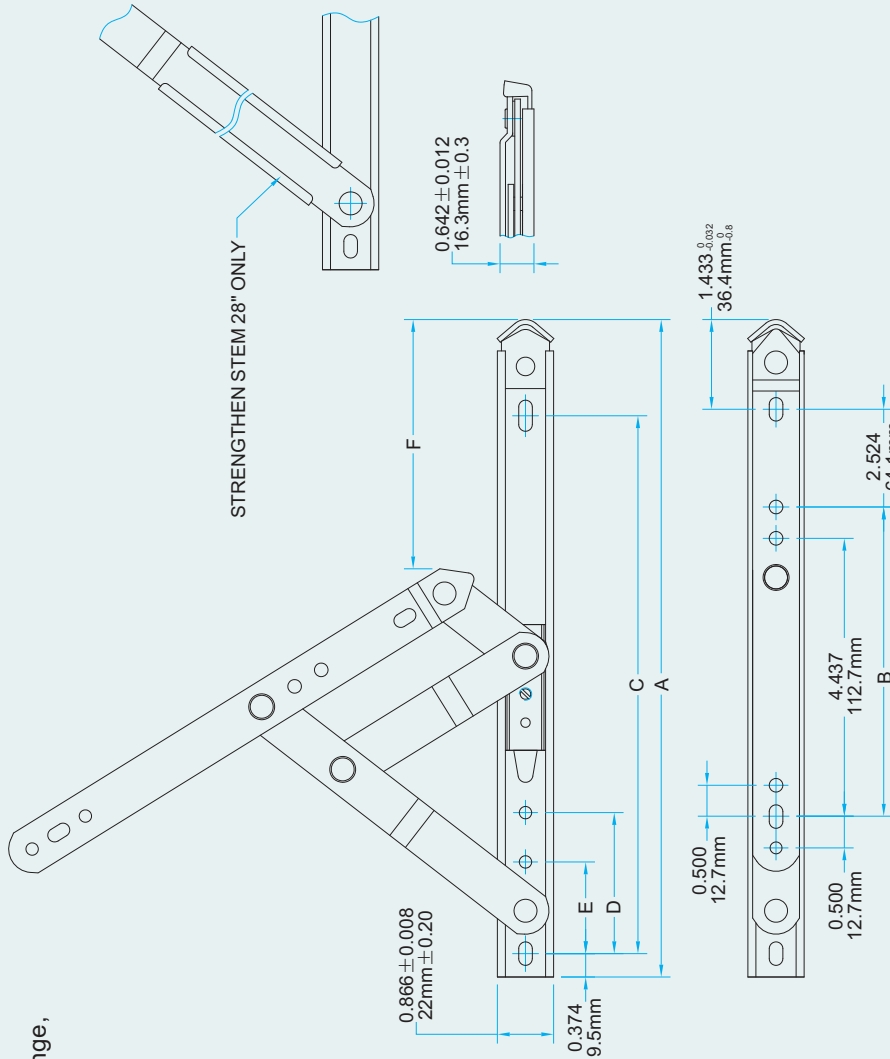
4. Four Bar Hinges

NOTE:

- 77010—304 SST material four bar hinge, length 10"
- 011—Four bar hinge series
- HD—Heavy duty
- SP—Standard Stop
- NP—No stop

Ordering example

- 77010-011HD-SP:
10" 304 SST four bar hinge, heavy duty, standard stop, 011 series
- 77012-011HD-NP-100:
12" 304 SST four bar hinge, heavy duty, no stop, loose rivet, 011 series



Part Number	F										Degree of Opening						
	STD. STOP	NO STOP	A	B	C	STD. STOP	D	NO STOP	E	STD. STOP	NO STOP	STD. STOP	NO STOP				
77010-011HD-SP			10.5"	N/A	8.591	2,250	1,375	4,000	6,189	101.6mm	157.2mm	58°	77°	100	100	Casement Hinge	
77010-011HD-NP			(266.7mm)		(218.2mm)	(57.2mm)	(35.0mm)	(101.6mm)	(157.2mm)								Casement Hinge
77012-011HD-SP			12.5"	4.938	10.591	4,000	1,625	4,205	7,776	106.8mm	197.5mm	52°	77°	100	100	Casement Hinge	
77012-011HD-NP			(317.5mm)	(125.4mm)	(269.0mm)	(101.6mm)	(41.3mm)	(106.8mm)	(197.5mm)								Casement Hinge
77014-011HD-SP			14.5"	5.938	12.591	5,656	2,125	4,457	9,252	113.2mm	235.0mm	48°	77°	100	100	Casement Hinge	
77014-011HD-NP			(368.3mm)	(150.8mm)	(319.8mm)	(143.7mm)	(54.0mm)	(113.2mm)	(235.0mm)								Casement Hinge
77016-011HD-SP			16.5"	6.938	14.591	6,938	2,625	5,188	10,762	131.8mm	273.1mm	49°	77°	100	100	Casement Hinge	
77016-011HD-NP			(419.1mm)	(176.2mm)	(370.6mm)	(176.2mm)	(66.7mm)	(131.8mm)	(273.1mm)								Casement Hinge
77018-011HD-SP			18.5"	7.938	16.591	8,312	3,125	5,851	12,252	147.7mm	311.2mm	49°	77°	100	100	Anwing Hinge	
77018-011HD-NP			(469.9mm)	(201.8mm)	(421.4mm)	(211.1mm)	(79.3mm)	(147.7mm)	(311.2mm)								Anwing Hinge
77020-011HD-SP			20.5"	8.938	18.591	9,625	3,625	6,508	13,811	165.3mm	350.8mm	49°	77°	100	100	Anwing Hinge	
77020-011HD-NP			(520.7mm)	(227.0mm)	(472.2mm)	(244.4mm)	(92.0mm)	(165.3mm)	(350.8mm)								Anwing Hinge
77024-011HD-SP			24.5"	10.938	22.591	13,500	4,625	6,516	16,732	117.4mm	425.0mm	45°	77°	100	100	Anwing Hinge	
77024-011HD-NP			(622.3mm)	(277.8mm)	(573.8mm)	(342.9mm)	(117.4mm)	(165.3mm)	(425.0mm)								Anwing Hinge
77028-011HD-SP			28.5"	12.938	26.591	17,000	N/A	6,972	N/A	N/A	N/A	40°	N/A	100	100	Anwing Hinge	
77028-011HD-NP			(711.2mm)	(335.0mm)	(675.4mm)	(431.8mm)		(177.1mm)									Anwing Hinge